

EO-KARRYMAT - Portable pre-assembly device for EO tube connections



Part number	Type
EOKARRYMAT	Complete assembly device including handpump, carrying case and operation manual

63 Parker Direct Link

VOMO - Pre-assembly tools for EO/EO-2 tube connections



63 Parker Direct Link

Part number	Tube Outside Diameter
	mm
VOM006LX	6
VOM008LX	8
VOM010LX	10
VOM012LX	12
VOM015LX	15
VOM018LX	18
VOM022LX	22
VOM028LX	28
VOM035LX	35
VOM042LX	42
VOM006SX	6
VOM008SX	8
VOM010SX	10
VOM012SX	12
VOM014SX	14
VOM016SX	16
VOM020SX	20
VOM025SX	25
VOM030SX	30
VOM038SX	38

TOOLING & ACCESSORIES

GHP - Backing plates



63 Parker Direct Link

Part number	Tube Outside Diameter mm	Connection series
GHP04X	4	LL
GHP06X	6	LL
GHP08X	8	LL
GHP10X	10	LL
GHP12X	12	LL
GHP06X	6	L
GHP08X	8	L
GHP10X	10	L
GHP12X	12	L
GHP15X	15	L
GHP18X	18	L
GHP22X	22	L
GHP28X	28	L
GHP35X	35	L
GHP42X	42	L
GHP06X	6	S
GHP08X	8	S
GHP10X	10	S
GHP12X	12	S
GHP14X	14	S
GHP16X	16	S
GHP20X	20	S
GHP25X	25	S
GHP30X	30	S
GHP38X	38	S

TOOLING & ACCESSORIES



BAV 6/12 - Combined tube bending and cutting tool



63 Parker DirectLink

Part number	Type
BAV06/12KPLX	Combined tube bending and cutting tool including 3 bending rolls for 6 to 12 mm tube and bending lever

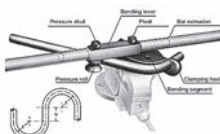
BV 6/18 - Tube bending tool



63 Parker DirectLink

Part number	Type
BV06/18KPLX	Tube bending tool complete device including 6 bending rolls for 6 to 18 mm tube and bending lever

BV 20/25 - Tube bending tool



63 Parker DirectLink

Part number	Type
BV20/25KPLX	BV 20/25 Tube bending device including 3 bending segments for tube outside diameter 20 to 25 mm and bending lever without bar extension tube

TOOLING & ACCESSORIES

8



AV 6/42 - Tube saw square



63 Parker
Direct Link

Part number	Type
AV06/42KPLX	Tube cutting tool

WZK - Tool boxes



63 Parker
Direct Link

Part number	Type
WZK1KOMPLX	Toolbox WZK1
WZK2KOMPLX	Toolbox WZK2

226 - Internal-External tube



63 Parker
Direct Link

Part number	Type
226A	Tube deburrer
226A BLADES	Replacement blades

Description:

- Parker PTB heavy duty 180° tube bender with unique indexing handle allowing the making of tight bends. For 1/4" to 1/2" and 6 mm to 12 mm.

Advantages:

- Rollers in the bending handle reduce friction and bending effort.

Benefits:

- Accurate and tight bends up to 180° in stainless steel and other tougher metals.
- Comfortable and durable ergonomically molded cushion grips.

Parker PTB heavy duty 180° tube bender with unique indexing handle



63 Parker Direct Link

Part number	Tube Outside Diameter	
	inch	mm
PTB-4T	1/4	
PTB-6T	3/8	
PTB-8T	1/2	
PTB-6M		6
PTB-8M		8
PTB-10M		10
PTB-12M		12



Parflange® 1025 is an orbital flaring machine designed to cold form high pressure tube connections. The unique feature of the Parflange® process is that the deformation of the tube end is achieved by rolling rather than by just pushing a tool into the tube end. The Parflange® machine smoothly compresses the tube material and achieves a high strength joint with a polished surface of the tube end.

Advantages:

- **Faster:**
 - 9-12 times the speed of comparable induction brazing.
 - Simple tube preparation - The Parflange® process does not require any special pre- or post-flange cleaning of the tube and sleeve.
- **Safety :**
 - Unlike brazing, the Parflange® process does not require any flux, braze alloy, post braze cleaner or rust inhibitor. An environmentally safe lubricant applied to the flanging pin is all that is required for the Parflange® process.
- **Environment:**
 - The Parflange® process is environmentally clean and safe. It does not use a fraction flame or any form of heating. Additionally, there is no emission of hazardous fumes, as is typical with welding and brazing.
- **Energy:**
 - The Parflange® process uses only a fraction of the energy needed for welding or brazing.
- **Corrosion resistance**
 - The Parflange® process accommodates the use of plated or unplated components (i.e. tube and sleeve). Thus, the high costs of electroplating assemblies after fabrication is eliminated by using pre-plated tube.
- **Excellent surface quality.**
 - The Parflange® process eliminates the potential leak path present at the braze or joint.

Benefits:

- Unique surface quality and mechanical strength.
- Proven technology for more than 14 years.
- Time and cost saving process.

Parflange® 1025 - Workshop machine for O-Lok® and Triple-Lok®



63 Parker PowerLine

Part number	Type
1025-220VMON050	Parflange® 1025 - Basic machine

Impact flaring tools for metric tube

Part number		Tube Outside Diameter	
Pre-flaring pin	Flaring pin	Vice block	mm
-	P17408	M27406	6
-	P17408	M05742	8
-	P17408	M27410	10
-	P17414	M27412	12
-	P17414	M27414	14
-	P17414	M27415	15
-	P17414	M27416	16
-	P17418	M27418	18
-	P17418	M27420	20
P1E	P17422	M14742	22
P1E	P17422	M27425	25
P1E	P17432	M27430	30
P1E	P17432	M27432	32
P1E	P17438	M24742	38

63 Parker DirectLink

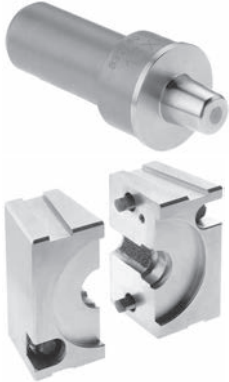
Impact flaring tools for imperial tube

Part number		Tube Outside Diameter	
Pre-flaring pin	Flaring pin	Vice block	inch
-	P17408	M04742	1/4
-	P17408	M05742	5/16
-	P17408	M06742	3/8
-	P17414	M08742	1/2
-	P17414	M10742	5/8
P1E	P17418	M12742	3/4
P1E	P17422	M14742	7/8
P1E	P17422	M16742	1
P1E	P17432	-	1 1/4
P1E	P17438	M24742	1 1/2

63 Parker DirectLink

TOOLING & ACCESSORIES

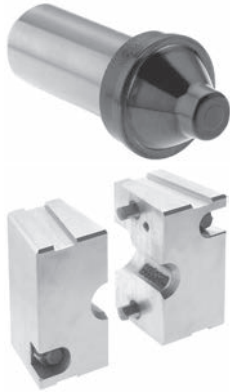
Parflange® tools for O-Lok® - Metric tubing



63 Parker Direct Link

Part number	Flange pin O-Lok®	Flange die O-Lok®	Tube size mm
B3018006X1M		M4018006X1M	6 x 1
B3018008X1M		M4018008X1M	8 x 1
B3018008X1.5M		M4018008X1.5M	8 x 1.5
B3018010X1M		M4018010X1M	10 x 1
B3018010X1.5M		M4018010X1.5M	10 x 1.5
B3018010X2M		M4018010X2M	10 x 2
B3018012X1M		M4018012X1M	12 x 1
B3018012X1.5M		M4018012X1.5M	12 x 1.5
B3018012X2M		M4018012X2M	12 x 2
B3018015X1.5M		M4018015X1.5M	15 x 1.5
B3018015X2M		M4018015X2M	15 x 2
B3018016X1.5M		M4018016X1.5M	16 x 1.5
B3018016X2M		M4018016X2M	16 x 2
B3018018X1.5M		M4018018X1.5M	18 x 1.5
B3018018X2M		M4018018X2M	18 x 2
B3018020X2M		M4018020X2M	20 x 2
B3018020X2.5M		M4018020X2.5M	20 x 2.5
B3018020X3M		M4018020X3M	20 x 3
B3018022X2.5M		M4018022X2.5M	22 x 2.5
B3018025X2.5M		M4018025X2.5M	25 x 2.5
B3018025X3M		M4018025X3M	25 x 3
B3018028X2M		M4018028X2M	28 x 2
B3018028X2.5M		M4018028X2.5M	28 x 2.5
B3018030X2M		M4018030X2M	30 x 2
B3018030X3M		M4018030X3M	30 x 3
B3018030X4M		M4018030X4M	30 x 4
B3018035X3M		M4018035X3M	35 x 3
B3018038X3M		M4018038X3M	38 x 3

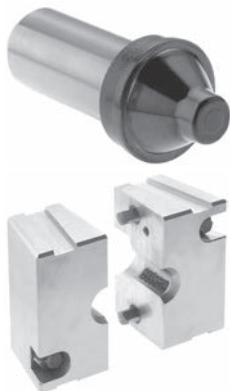
Parflange® tools for Triple-Lok® - Metric tubing



63 Parker
DirectLink

Part number	Flare pin Triple-Lok®	Flare die Triple-Lok®	Tube size mm
B3007406X1M		M4007406M	6 x 1
B3007406X1.5M		M4007406M	6 x 1.5
B3007408X1M		M4007408M	8 x 1
B3007408X1.5M		M4007408M	8 x 1.5
B3007410X1M		M4007410M	10 x 1
B3007410X1.5M		M4007410M	10 x 1.5
B3007412X1.5M		M4007412M	12 x 1.5
B3007412X2M		M4007412M	12 x 2
B3007415X1.5M		M4007415M	15 x 1.5
B3007415X2M		M4007415M	15 x 2
B3007416X1.5M		M4007416M	16 x 1.5
B3007416X2M		M4007416M	16 x 2
B3007418X1.5M		M4007418M	18 x 1.5
B3007418X2M		M4007418M	18 x 2
B3007420X2M		M4007420M	20 x 2
B3007420X2.5M		M4007420M	20 x 2.5
B3007422X2M		M4007422M	22 x 2
B3007425X2.5M		M4007425M	25 x 2.5
B3007425X3M		M4007425M	25 x 3
B3007430X3M		M4007430M	30 x 3
B3007432X3M		M4007432M	32 x 3
B3007438X4M		M4007438M	38 x 4
B3007442X3M		M4007442M	42 x 3

Parflange® tools for Triple-Lok® - Inch Tubing



Part number	Flare pin Triple-Lok®	Flare die Triple-Lok®	Tube size inch
B3004X049074		M4004074	1/4 x 0.049
B3006X049074		M4006074	3/8 x 0.049
B3006X065074		M4006074	3/8 x 0.065
B3008X065074		M4008074	1/2 x 0.065
B3010X083074		M4010074	5/8 x 0.065
B3010X095074		M4010074	5/8 x 0.095
B3012X095074		M4012074	3/4 x 0.095
B3016X095074		M4016074	1 x 0.095
B3020X120074		M4020074	1 1/4 x 0.120

TOOLING & ACCESSORIES

88

